

R6030 Temperature/RH Datalogger Software Features

Compatible with Microsoft Windows© XP / Vista / 7 / 8 / 10
Connectivity: USB

Software Features

- Device data management: Erase/load instrument data
- Set up datalogging parameters
- Download data in both text and graph formats (Figure 1,2)
- Export data to Microsoft Excel (See sample data, Figure 3)

Start Time: 17/05/17 16:13:17 End Time: 17/05/17 16:41:27 Sampling rate: 10sec Data number: 170
Temp Alarm HI: 40 C Temp Alarm Low: 0 C RH Alarm HI: 90 %RH RH Alarm Low: 30 %RH
Temp MAX: 24.4 C @16:17:37 17/05/17 Temp MIN: 22.7 C @16:41:17 17/05/17 Temp AVG: 23.52 C
RH MAX: 37.3 %RH @16:41:17 17/05/17 RH MIN: 27.1 %RH @16:18:07 17/05/17 RH AVG: 28.76 %RH

No.	Time	(%RH) Humidity	(C) Temperature	(F) Temperature
1	17/05/17 16:13:17	32.7	23.9 C	75.0 F
2	17/05/17 16:13:27	33.8	24.0 C	75.2 F
3	17/05/17 16:13:37	35.1	24.0 C	75.2 F
4	17/05/17 16:13:47	33.6	24.1 C	75.4 F
5	17/05/17 16:13:57	31.5	24.2 C	75.6 F
6	17/05/17 16:14:07	30.4	24.2 C	75.6 F
7	17/05/17 16:14:17	29.8	24.2 C	75.6 F
8	17/05/17 16:14:27	29.4	24.3 C	75.7 F
9	17/05/17 16:14:37	29.2	24.3 C	75.7 F
10	17/05/17 16:14:47	28.9	24.4 C	75.9 F
11	17/05/17 16:14:57	28.8	24.4 C	75.9 F
12	17/05/17 16:15:07	28.6	24.4 C	75.9 F
13	17/05/17 16:15:17	28.5	24.4 C	75.9 F
14	17/05/17 16:15:27	28.4	24.4 C	75.9 F
15	17/05/17 16:15:37	28.3	24.4 C	75.9 F
16	17/05/17 16:15:47	28.3	24.4 C	75.9 F
17	17/05/17 16:15:57	28.2	24.4 C	75.9 F
18	17/05/17 16:16:07	28.1	24.4 C	75.9 F
19	17/05/17 16:16:17	28.1	24.4 C	75.9 F
20	17/05/17 16:16:27	28.0	24.4 C	75.9 F
21	17/05/17 16:16:37	28.0	24.4 C	75.9 F
22	17/05/17 16:16:47	28.0	24.4 C	75.9 F
23	17/05/17 16:16:57	28.0	24.4 C	75.9 F
24	17/05/17 16:17:07	27.1	24.4 C	75.9 F
25	17/05/17 16:17:17	27.1	24.4 C	75.9 F
26	17/05/17 16:17:27	27.1	24.3 C	75.7 F
27	17/05/17 16:17:37	27.1	24.4 C	75.9 F
28	17/05/17 16:17:47	27.1	24.3 C	75.7 F
29	17/05/17 16:17:57	27.1	24.3 C	75.7 F
30	17/05/17 16:18:07	27.1	24.3 C	75.7 F

Figure 1

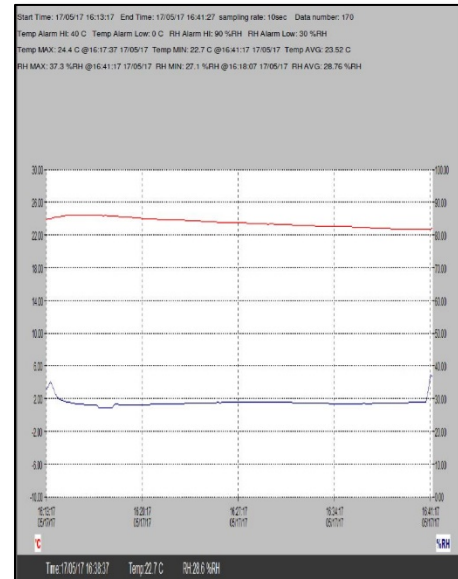


Figure 2

NO	Temp	RH	TIME
1	23.9 C	32.7 %RH	17-05-17/16:13:17
2	24.0 C	33.8 %RH	17-05-17/16:13:27
3	24.0 C	35.1 %RH	17-05-17/16:13:37
4	24.1 C	33.6 %RH	17-05-17/16:13:47
5	24.2 C	31.5 %RH	17-05-17/16:13:57
6	24.2 C	30.4 %RH	17-05-17/16:14:07
7	24.2 C	29.8 %RH	17-05-17/16:14:17
8	24.3 C	29.4 %RH	17-05-17/16:14:27
9	24.3 C	29.2 %RH	17-05-17/16:14:37
10	24.4 C	28.9 %RH	17-05-17/16:14:47
11	24.4 C	28.8 %RH	17-05-17/16:14:57
12	24.4 C	28.6 %RH	17-05-17/16:15:07
13	24.4 C	28.5 %RH	17-05-17/16:15:17
14	24.4 C	28.4 %RH	17-05-17/16:15:27
15	24.4 C	28.3 %RH	17-05-17/16:15:37
16	24.4 C	28.3 %RH	17-05-17/16:15:47
17	24.4 C	28.2 %RH	17-05-17/16:15:57
18	24.4 C	28.1 %RH	17-05-17/16:16:07
19	24.4 C	28.1 %RH	17-05-17/16:16:17
20	24.4 C	28.0 %RH	17-05-17/16:16:27
21	24.4 C	28.0 %RH	17-05-17/16:16:37
22	24.4 C	28.0 %RH	17-05-17/16:16:47
23	24.4 C	28.0 %RH	17-05-17/16:16:57
24	24.4 C	27.1 %RH	17-05-17/16:17:07
25	24.4 C	27.1 %RH	17-05-17/16:17:17
26	24.3 C	27.1 %RH	17-05-17/16:17:27
27	24.4 C	27.1 %RH	17-05-17/16:17:37
28	24.3 C	27.1 %RH	17-05-17/16:17:47
29	24.3 C	27.1 %RH	17-05-17/16:17:57
30	24.3 C	27.1 %RH	17-05-17/16:18:07

Figure 3